

♩ = 109

The Turn

words and music by Peter Buffett

VERSE 1

G F Am F

all of the times that we could_ have_ should have_ did-n't

G Am F G F

all of the things that we thought_ we_ knew all of the truth that we tried_ to_ hide

Am F G Am F

but_ could-n't as so ma-ny words we be- lieved_ were true

CHORUS 1

Dm G/B C Am F Dm G/B C Am F

far be yond the point_ of_ no_ re turn_ on - ly grace can_ guide_ us_ on - ly_ love

VERSE 2

G G F Am

_ will make the turn_ how do we know when we feel_ what's real what

2

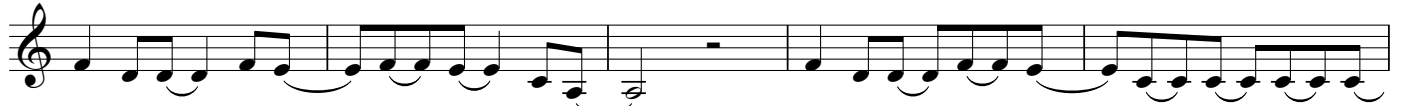


is-n't how can we tell_ that the path___ is___ true what is the mean-ing of signs



___ we_ find but_ should-n't lost in the dark as the past___ comes true

CHORUS 2



far be yond the point___ of___ no___ re turn___ on - ly grace can_ guide___ us___ on - ly___ love

OUTRO



___ will make the turn___

